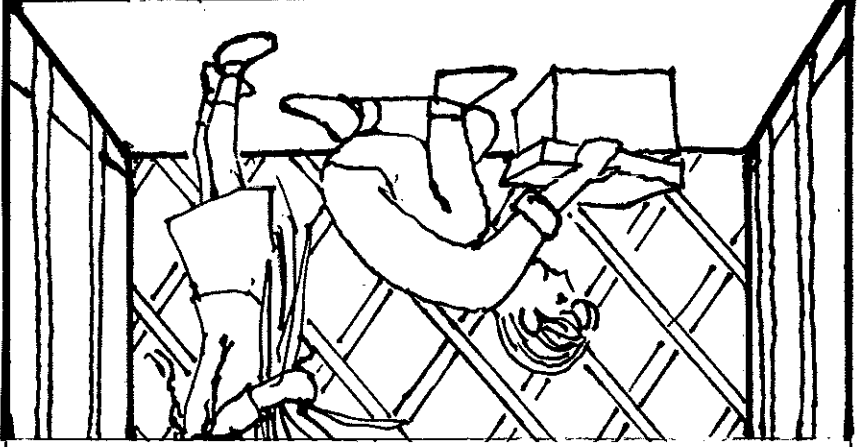
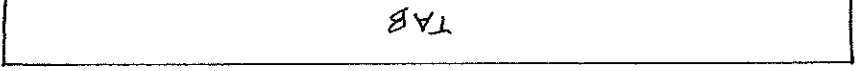
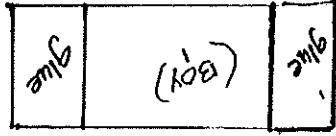
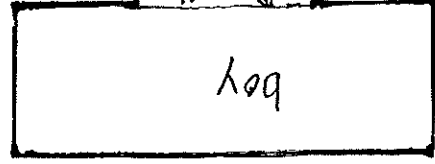


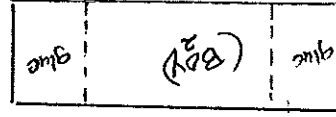
LINE THESE PIECES UP BACK TO BACK AND TAB TO TOGETHER BUT LEAVE THE TABS FREE OF GLUE. THEY WILL BE INSERTED INTO THE SLOT ON PAGE 13, THEN "BUTTERFLIED" AND GLUED TO THE BACK OF THE PAGE.



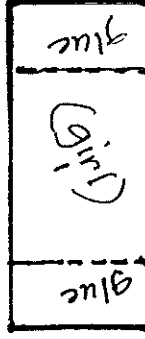
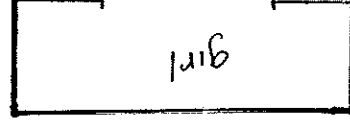
FOR PAGE 13



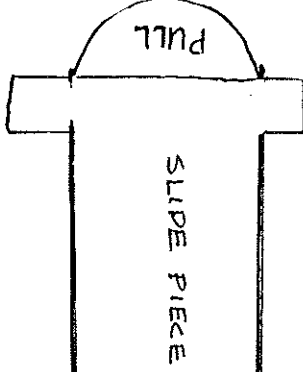
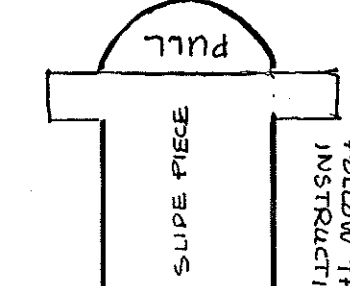
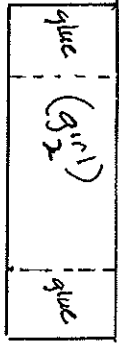
↓ THIS PIECE SHOULD BE GLUED TO BACK OF PAGE BEHIND THE SQUARE CUT OUT IN BOYS FACE. (LINE UP THE TOP EDGE WITH THE TOP EDGE OF SQUARE)



THIS PIECE SHOULD BE POSITIONED NEAR BOTTOM OF PAGE TO STOP THE PROGRESSION OF THE "SLIDE PIECE" AT THE POINT WHERE THE MOUTH IS CLOSED.



FOR THESE PIECES FOLLOW THE RESPECTIVE INSTRUCTIONS ABOVE →



FOR PAGE 14

(USE BRAD)

FOR PAGE 15

